



# NOTICE

## Your Streets Will Be Closed for Maintenance

If weather causes a halt to the project, your streets may be required to be closed at a later date. If this happens, you will find the latest updates on our web page [www.pavemap.com](http://www.pavemap.com)

-- We typically treat communities in sections, these sections are shown on the accompanying site map--

Pavecon will be performing street repairs in your area. We ask for your cooperation during this process, we will be Seal coating the asphalt in your community..

At Pavecon, our goal is to complete this repair as scheduled with minimal inconvenience for residents. We strive for clear communication *before, during, and after* each project. Since asphalt maintenance requires dry, clean, and unobstructed conditions, it is imperative that residents comply with the following instructions:

### Where Do I Park My Car?

- While your side of the road is closed, you may park on the street in an area outside of the work zone. No Vehicles will be allowed on the newly treated road surface until the road is reopened. Please do not park within 50 feet of any road worked on.

### What if my car is parked on a road that is closed?

- We will begin work at 7:30 am and vehicles will be allowed to exit the area up until 8:30 am. The streets being treated will be closed daily during work hours. All roads will be REOPENED at days end.(SUBJECT TO CHANGE) **If your vehicle is on the street when work begins, it will have to be towed at owner's expense.**

### What if I drive on the road while closed?

- Please do not attempt to drive on the road while it is closed as this may cause damage to your vehicle and slow down the process. **Should there be any injury or damage to person, vehicles or pavement surface for failure to follow the procedures set forth by Pavecon Ltd. Co., or Continental Properties, the Owner will be responsible for all damages.**

### Frequently Asked Questions:

#### Q: What will we do on trash day?

A: If we are treating your street on your designated pick up day, please coordinate to place trash in an open area.

#### Q: How will we get our mail, FEDEX and UPS Packages?

A: There shouldn't be any interruptions with deliveries.

#### Q: What if I or a family member has a disability and cannot walk from where we are asked to park?

A: If you are disabled please contact the Project Manager, Brennan Bradley at 731-394-8649, we can make arrangements with our crews to leave half the road in front of your drive way untreated at a time allowing you to access your driveway at all times.

#### Q: How will this affect any landscaping work?

A: Please contact your lawn care company and make arrangements to have your lawn treated before or after the scheduled work, they will not be able to access your property. Additionally, we ask that sprinkler systems be turned off during this process, water won't allow the material to cure correctly.

#### Q: How will this affect emergency Vehicles?

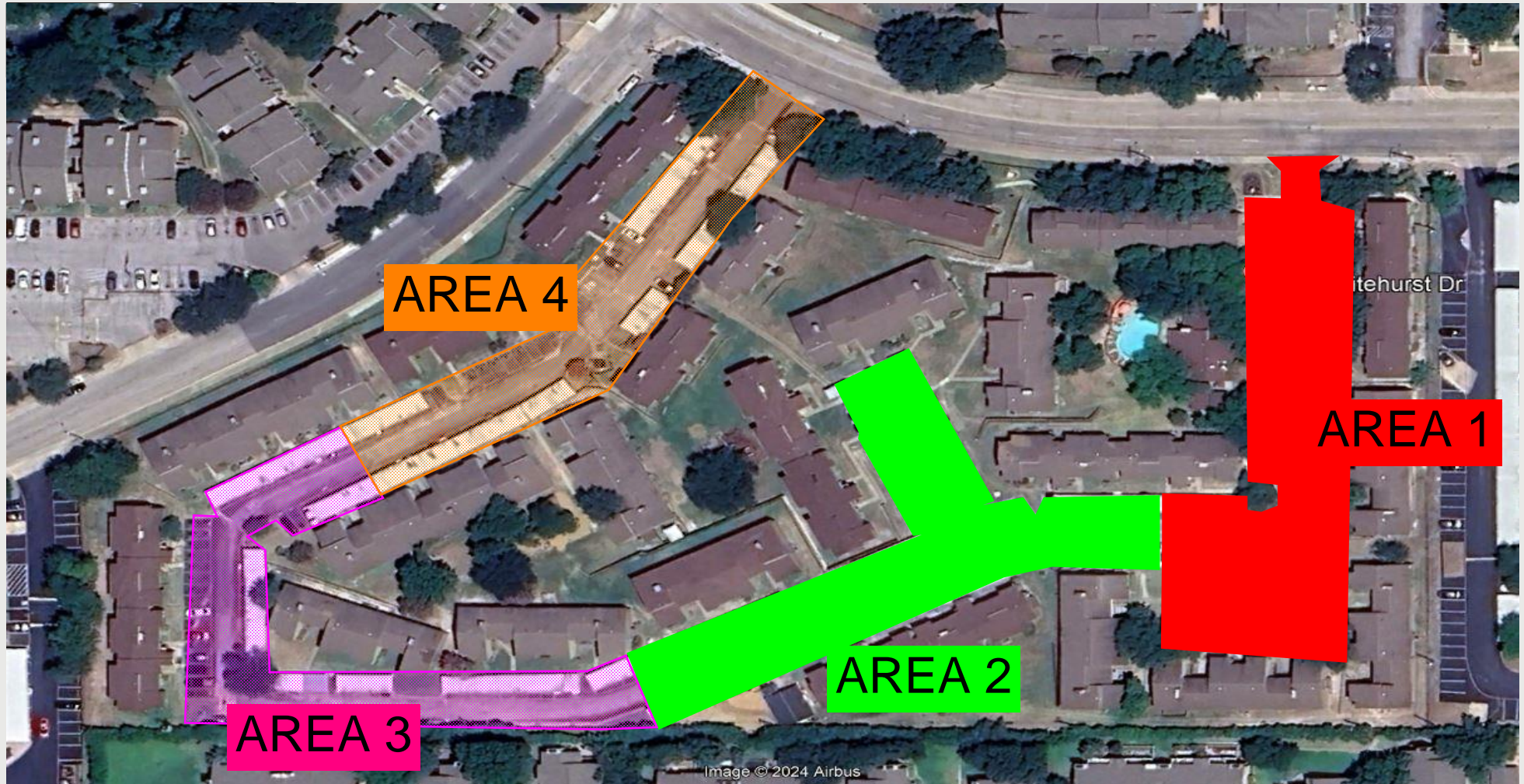
A: Emergency vehicles will be able to access any home in the neighborhood 24 hours a day.

- **Normal Traffic Patterns and Driving Routes may need to be adjusted** as required for maintenance.
- Pavecon crews will erect barricades and use tape at scheduled Sections denying access to all vehicles.
- We ask that barricades and tape not be moved or crossed while crews have areas sectioned off. Tracked material will be the responsibility of the homeowner.
- Close windows and doors; the reconstruction process can be very dusty.
- If it looks wet or shiny, it isn't dry and should be avoided.
- Please be extra vigilant with children and pets; there will be a lot of moving equipment during these times.
- 

Feel free to call the Project Manager with any questions at 731-394-8649 – Brennan Bradley

# PAVEMENT REPAIR PLAN

The Ellington  
9850 Whitehurst Dr, Dallas, TX



Area 1: Completed

Area 2: Completed

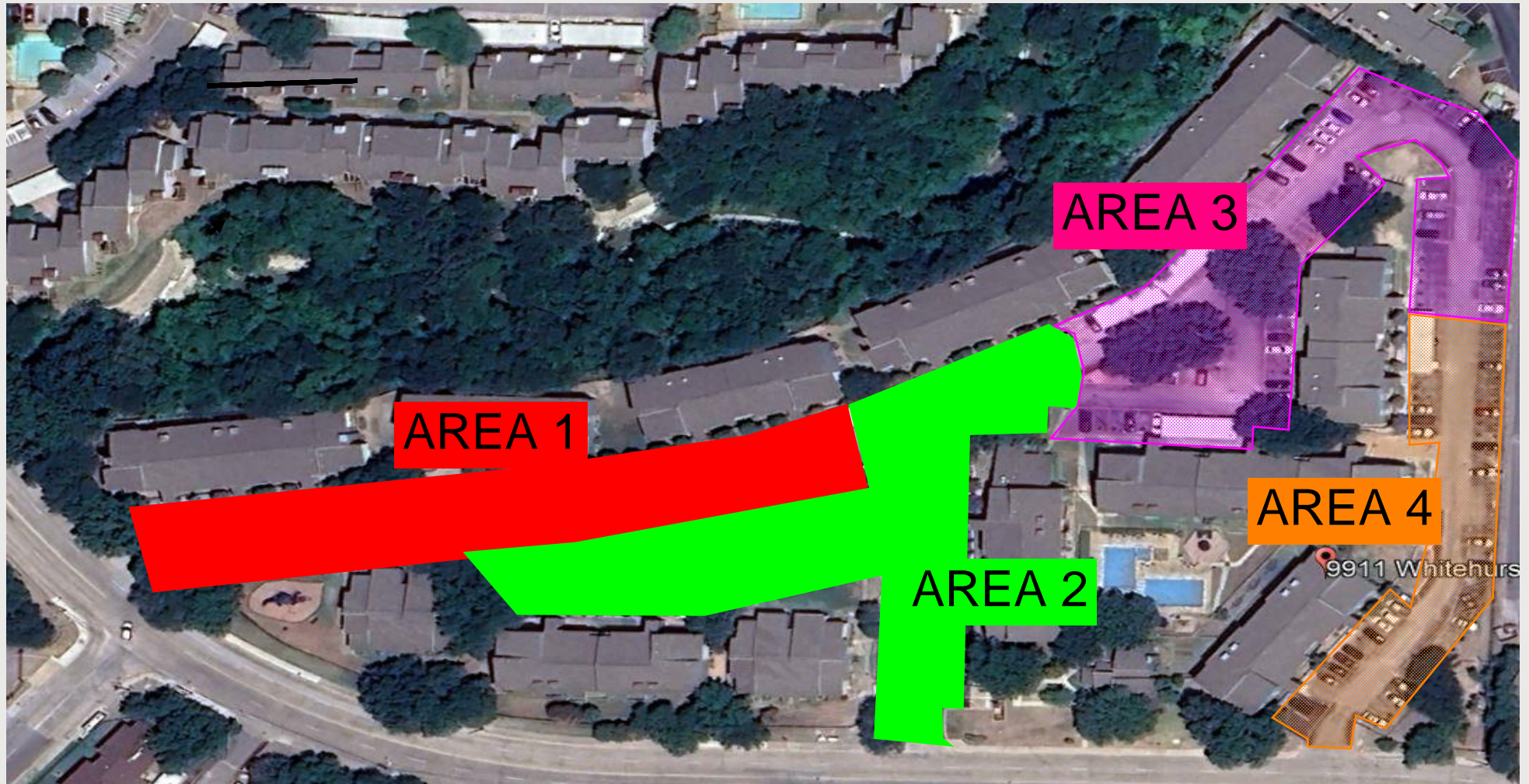
Area 3: Wednesday May 14 - Friday May 16

Area 4: Wednesday May 21 - Friday May 23



# PAVEMENT REPAIR PLAN

The Garrison  
9911 Whitehurst Rd, Dallas, TX



Area 1: Complete

Area 2 : Monday May 12 - Wednesday May 14

Area 3 : Monday May 19 - Wednesday May 21

Area 4 : Monday May 26 -Wednesday May 28