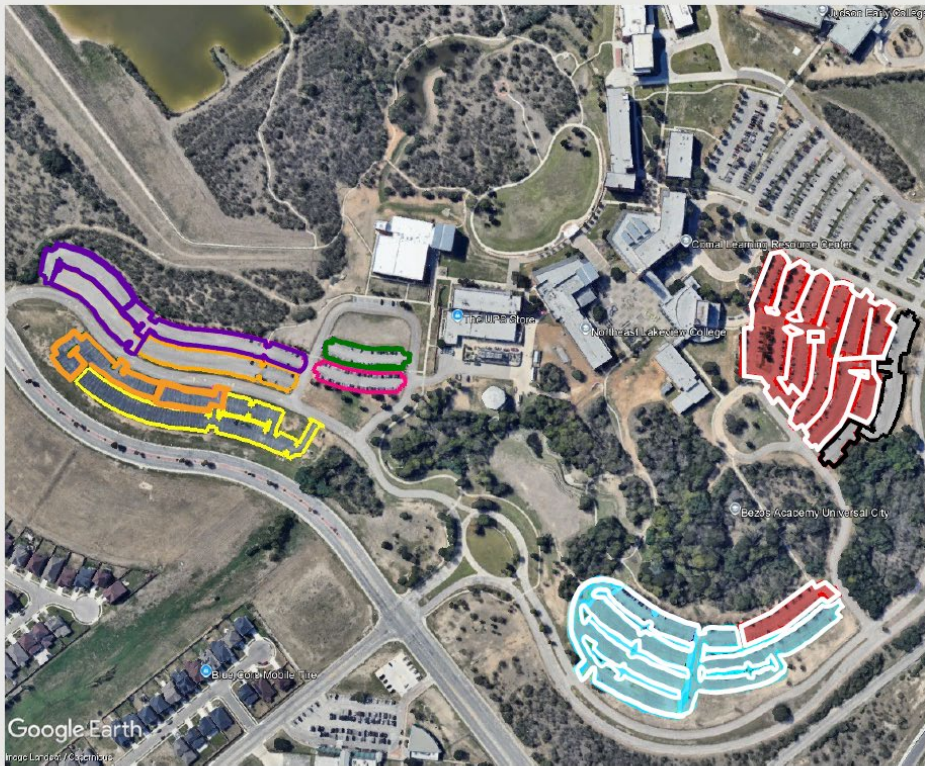


This was last updated March 31, 2025.

Northeast Lakeview Seal Coat Phase Plan



- Legend**
- Complete
 - March 24th
 - March 25th & 27th
 - March 28th & 29th
 - March 31st - April 3rd
- Legend**
- April 4th & 5th
 - April 7th - 10th

Please DO NOT park in the highlighted area above.

We will begin work at 7:50 am

See next page

NOTICE LAST UPDATED 3/31/25
Part of Your Parking Lot Will Be Closed for Maintenance
(NOTICE UPDATES Weekly)

If weather causes a halt to the project, your streets may be required to be closed at a later date. If this happens, you will find the latest updates on the [Northeast Lakeview](#) web page or by going to www.pavemap.com

-- Work will be done in sections, these sections are shown on the accompanying site map—

Pavecon will be performing parking lot maintenance in your area. This project will help to significantly extend the life of your parking lot. We ask for your cooperation during this process, we will be performing asphalt Sealing throughout your campus.

At Pavecon, our goal is to complete this repair as scheduled with minimal inconvenience for faculty and students. We strive for clear communication *before, during, and after* each project. Since asphalt maintenance requires dry, clean, and unobstructed conditions, it is imperative that faculty and students comply with the following instructions:

Where Do I Park My Car?

- While your area of the road is closed, you may park on the in an area outside of the work zone.

What if my car is parked on a road that is closed?

- We will begin work at 7:30 am and vehicles will be allowed to exit the area up until 8:30 am. If your vehicle is on the lot when work begins, it will have to be towed at owner's expense.

Frequently Asked Questions:

Q: What if I or a family member has a disability and cannot walk from where we are asked to park?

A: If you are disabled, please contact our office at 210-290-2140, it may be possible to make special arrangements on a case by case basis.

Q: How will this affect emergency Vehicles?

A: Emergency vehicles will be able to access any home in the neighborhood 24 hours a day.

- **Normal Traffic Patterns and Driving Routes may need to be adjusted** as required for maintenance.
- Pavecon crews will erect barricades and use tape at scheduled Sections denying access to all vehicles.
- We ask that barricades and tape not be moved or crossed while crew is working.
- Tracked material will be the responsibility of the owner.
- **Close windows and doors.**
- Please be extra vigilant with children.

Feel free to call the Project Manager with any questions at (210) 290-2140.

**FAILURE TO COMPLY WITH BARRICADES AND/OR
RESTRICTIONS COULD LEAD TO DAMAGES TO YOUR
VEHICLES!!**